

## Water Wash Control Panel Continuous Cold Water Spray

# SB10C

Manual Control, Single Sequence Wash for up to 46 ft (14 m) of water wash hood

### General Description

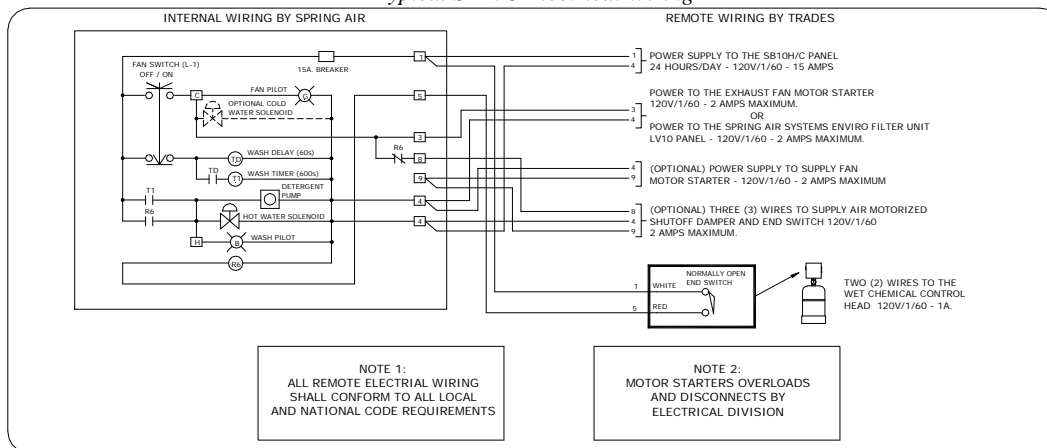
Each water wash hood or group of hoods requires a control panel. The single sequence water wash control panel Model SB10C is for type "CD" water wash hoods. The SB10C series of panels are all stock at our factory for immediate delivery.

These control panels contain the electrical and plumbing required to operate the exhaust fan, the continuous cold water spray, and wash cycle. The continuous cold water spray causes the grease particles to congeal forming larger globules. The larger particles are more readily removed increasing the grease extractor efficiency before entering the

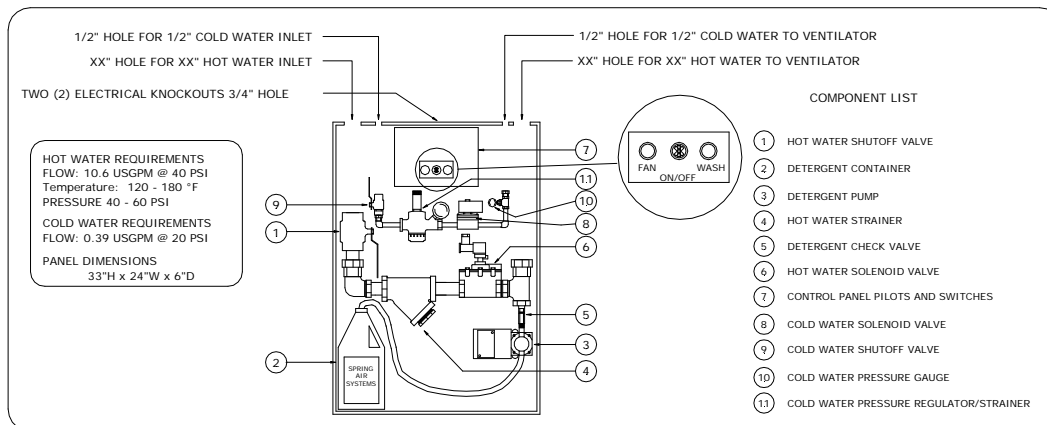
VORTEX collection chamber. The model SB10C is a manual control with an ON/OFF selector switch. The single sequence wash can wash up to 46 feet (14m) of water wash hood.

The cold water spray operates continuously while the exhaust fan is running. Each time the exhaust fan is shut off manually or automatically, the cold water spray shuts off and the group of hoods connected to the control panel is washed. At the end of the wash cycle the panel remains idle until the next ON and OFF sequence. Refer to the *Spring Air Systems Hood Engineering Manual* for detailed description of the control panel sequence of operation.

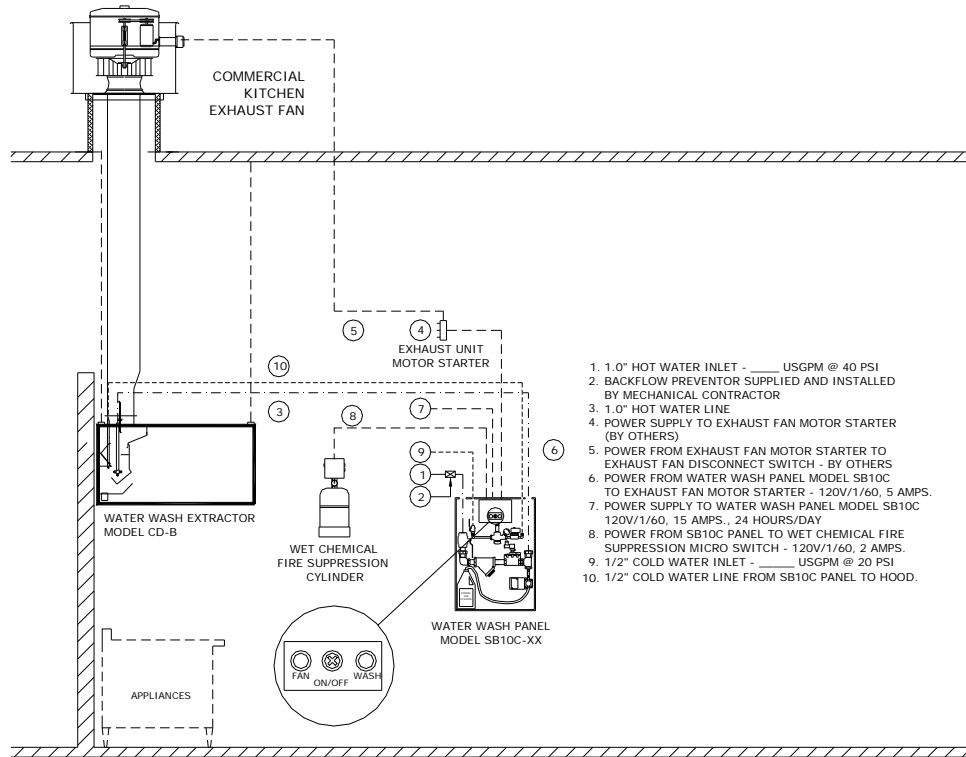
### Typical SB10C Electrical Wiring



### Typical Plumbing SB10C Components



Typical Field Wiring and Plumbing



1. 1.0" HOT WATER INLET - \_\_\_\_\_ USGPM @ 40 PSI
2. BACKFLOW PREVENTOR SUPPLIED AND INSTALLED BY MECHANICAL CONTRACTOR
3. 1.0" HOT WATER LINE
4. POWER SUPPLY TO EXHAUST FAN MOTOR STARTER (BY OTHERS)
5. POWER FROM EXHAUST FAN MOTOR STARTER TO EXHAUST FAN DISCONNECT SWITCH - BY OTHERS
6. POWER FROM WATER WASH PANEL MODEL SB10C TO EXHAUST FAN MOTOR STARTER - 120V/1/60, 5 AMPS.
7. POWER SUPPLY TO WATER WASH PANEL MODEL SB10C 120V/1/60, 15 AMPS., 24 HOURS/DAY
8. POWER FROM SB10C PANEL TO WET CHEMICAL FIRE SUPPRESSION MICRO SWITCH - 120V/1/60, 2 AMPS.
9. 1/2" COLD WATER INLET - \_\_\_\_\_ USGPM @ 20 PSI
10. 1/2" COLD WATER LINE FROM SB10C PANEL TO HOOD.

Length of Hood		Control Panel Hot Water Connections	
ft	m	in	mm
Up to 13	Up to 4	0.75	19
Up to 26	Up to 8	1.00	25
Up to 46	Up to 14	1.25	32

Notes:

1. All control panels are 24" x 30" x 6" (610 mm x 762 mm x 152 mm)
2. The DB hood has an equivalent length of 1.5 the actual length of purposes of using this chart.
3. Cold water inlet and outlet size is 1/2" (13mm) for all panels.

Installation

- The size of the inlet and outlet pipe connections are determined by the total length of hood connected to the control panel. Refer to the Engineering Data Chart to the left for Pipe size Vs Hood length.
- The remote piping must meet all local plumbing codes. The control panel must be installed with protection to stop the flow of detergent back into the potable water supply. Spring Air Systems will always prepipe the detergent line inside the water wash plumbing enclosure panel unless advised otherwise prior to shipment.

Spring Air Systems Model No. SB10C Wash Panel Specification

The water wash control panel shall be a Spring Air Systems model no. SB10C, hot water wash, cold water spray, manual, single wash sequence, UL/ ULC listed, and CSA certified. The stainless steel water wash control panel shall contain all the electrical and plumbing components to operate the exhaust fan, cold water spray, and water wash cycle. The electrical section shall include a ten minute adjustable timer, an on/off fan selector switch, and a wash on pilot light. The plumbing section shall include a hot water solenoid valve, hot water shut off valve, hot water line strainer, detergent pump, detergent check valve, and one litre of detergent. The cold water components shall include a cold water solenoid valve, cold water shut off valve, cold water pressure regulator/strainer, and a cold water pressure gauge. The panel shall be either wall mounted or recessed where shown ready for interconnection of the mechanical and

electrical services by the mechanical and electrical divisions as per the manufacturer's instructions.

Engineering Data

Item Number:	- _____
Model Number:	- SB10C-XX
Panel Dimensions	- 24" X 30" X 6"
Hot Water Inlet Connection:	- 1"
Cold Water Inlet Connection:	- 1/2"
Cold Water Outlet:	- 1/2"
Hot Water Outlet	-
No. of Sequences:	- 1
Sequence #1	-
Valve Size:	- _____
Total Hot Water Flow:	- _____
Total Cold Water Flow:	- _____
Electrical:	- 120v/1/60 - 15 AMPS.