

Water Wash Control Panel

Hot Water Wash

SB10H

Manual Control, Single Sequence Wash for up to 46 ft (14 m) of water wash hood

General Description

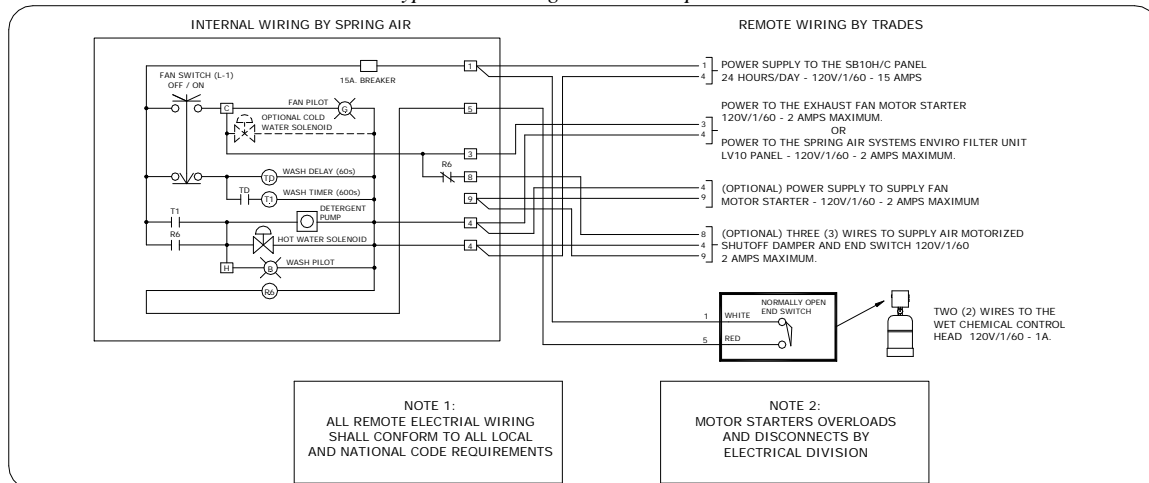
Each water wash hood or group of hoods requires a control panel. The single sequence water wash control panel Model SB10H is for type "HD" water wash hoods. The SB10 series of panels are all stock at our factory for immediate delivery.

These control panels contain the electrical and plumbing required to operate the exhaust fan and wash cycle. The model SB10H is a manual control with an

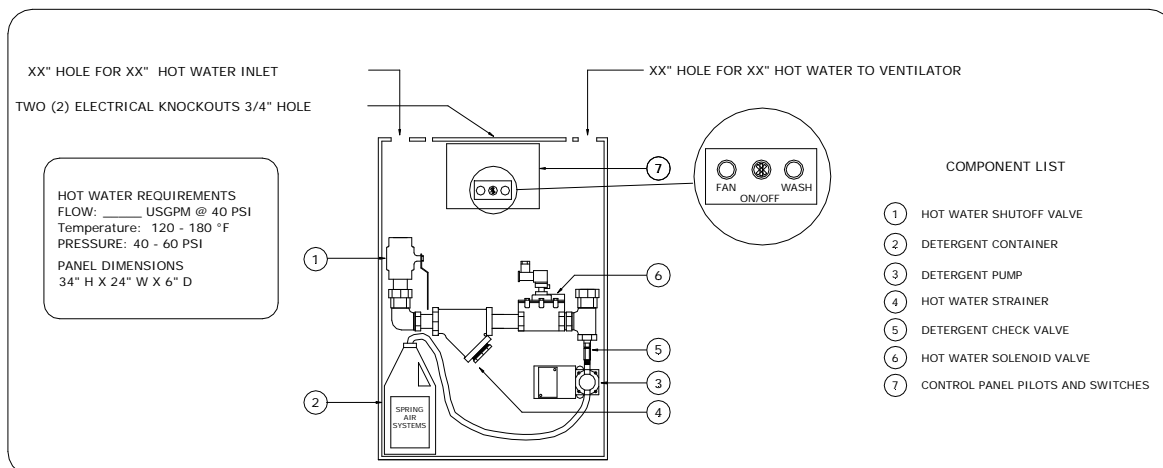
ON/OFF selector switch. The single sequence wash can wash up to 46 feet (14m) of water wash hood.

Each time the exhaust fan is shut off manually or automatically, the group of hoods connected to the control panel is washed. At the end of the wash cycle the panel remains idle until the next ON and OFF sequence. Refer to the Spring Air Systems Hood Engineering Manual for detailed description of the control panel sequence of operation.

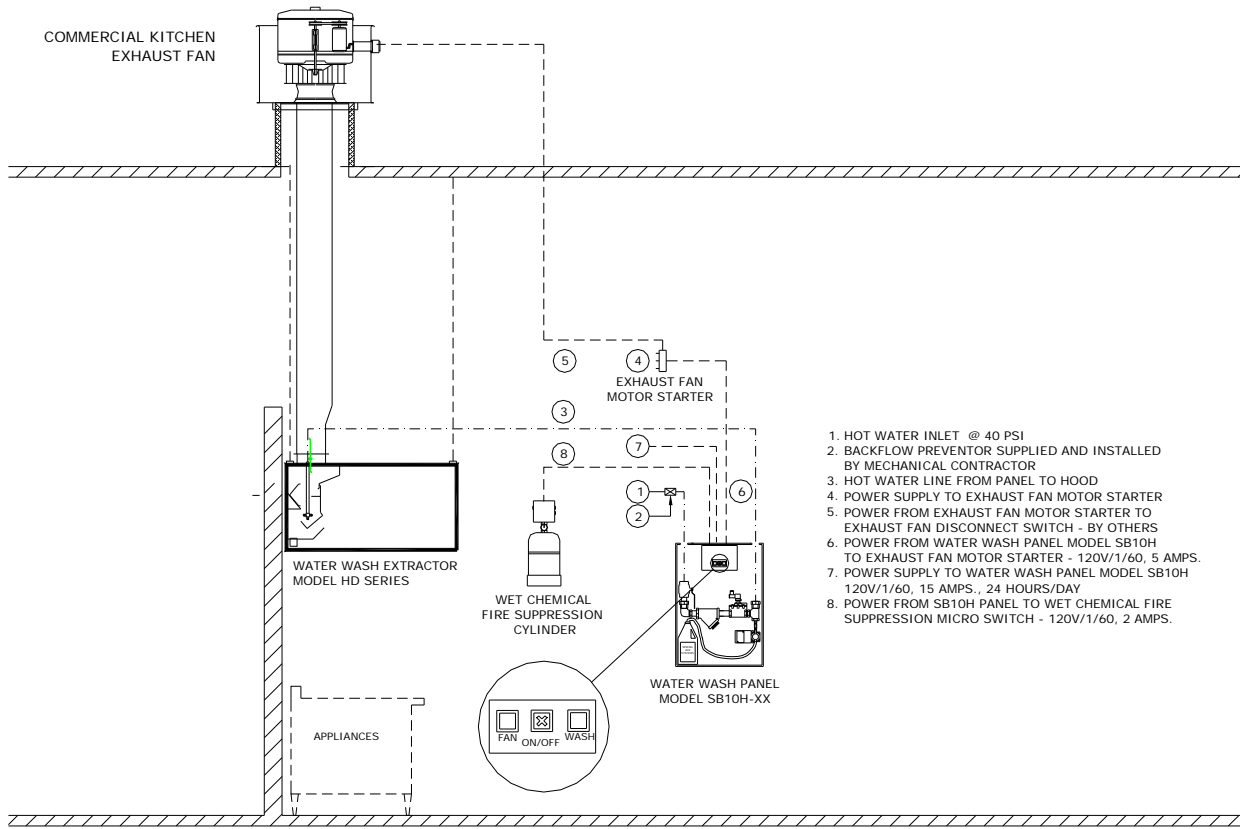
Typical Plumbing SB10H Components



Typical SB10H Electrical Wiring



Typical Field Wiring and Plumbing



1. HOT WATER INLET @ 40 PSI
2. BACKFLOW PREVENTOR SUPPLIED AND INSTALLED BY MECHANICAL CONTRACTOR
3. HOT WATER LINE FROM PANEL TO HOOD
4. POWER SUPPLY TO EXHAUST FAN MOTOR STARTER
5. POWER FROM EXHAUST FAN MOTOR STARTER TO EXHAUST FAN DISCONNECT SWITCH - BY OTHERS
6. POWER FROM WATER WASH PANEL MODEL SB10H TO EXHAUST FAN MOTOR STARTER - 120V/1/60, 5 AMPS.
7. POWER SUPPLY TO WATER WASH PANEL MODEL SB10H 120V/1/60, 15 AMPS., 24 HOURS/DAY
8. POWER FROM SB10H PANEL TO WET CHEMICAL FIRE SUPPRESSION MICRO SWITCH - 120V/1/60, 2 AMPS.

Length of Hood		Control Panel Hot Water Connections	
ft	m	in	mm
Up to 13	Up to 4	0.75	19
Up to 26	Up to 8	1.00	25
Up to 46	Up to 14	1.25	32

Notes:

1. All control panels are 24" x 30" x 6" (610 mm x 762 mm x 152 mm)
2. The DB hood has an equivalent length of 1.5 the actual length of purposes of using this chart.

Spring Air Systems Model No. SB10H Wash Panel Specification

The water wash control panel shall be a Spring Air Systems model no. SB10H, manual, single wash sequence, UL/ULC listed, and CSA certified. The stainless steel water wash control panel shall contain all the electrical and plumbing components to operate the exhaust fan, and water wash cycle.

Description:

The electrical section shall include a ten minute adjustable timer, an on/off fan selector switch, and a wash on pilot light. The plumbing section shall include a hot water solenoid valve, hot water shut off valve, hot water line strainer, detergent pump, detergent check valve, and one litre of detergent. The panel shall be either wall mounted or recessed where shown ready for interconnection of the mechanical and

Installation

- The size of the inlet and outlet pipe connections are determined by the total length of hood connected to the control panel. Refer to the Engineering Data Chart to the left for Pipe size Vs Hood length.
- The remote piping must meet all local plumbing codes. The control panel must be installed with protection to stop the flow of detergent back into the potable water supply. Spring Air Systems will always prepipe the detergent line inside the water wash plumbing enclosure panel unless advised otherwise prior to shipment.

electrical services by the mechanical and electrical divisions as per the manufacturer's instructions.

Engineering Data

Item Number _____
 Model Number: SB10H-_____
 Panel Dimensions 24" X 30" X 6"
 Hot Water Inlet: _____
 Hot Water Outlet _____
 No. of Sequences: One

Total Hot Water Flow _____ USGPM
 @ 40 PSIG
 Electrical: 120v/1/60 - 10 AMPS.